



Workspace 3 [Hybrid]

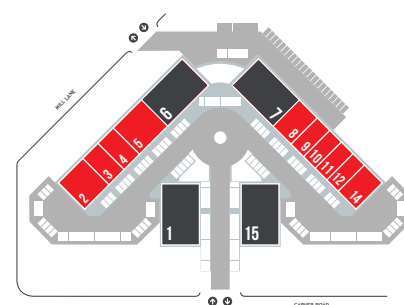
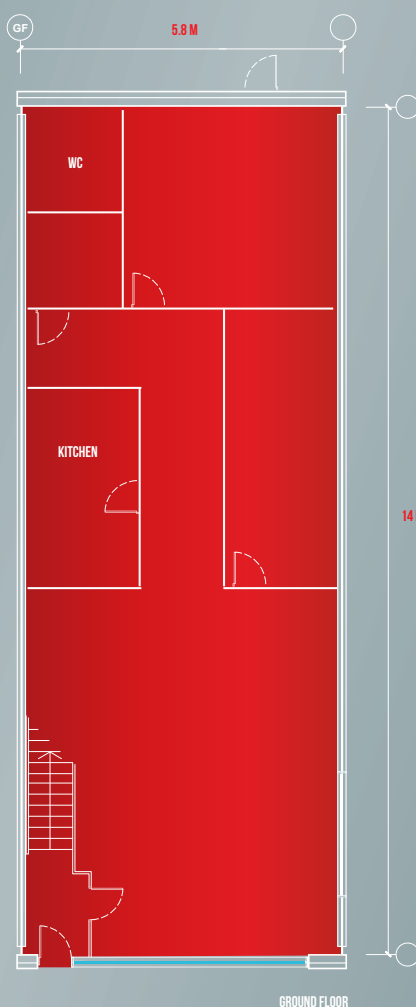
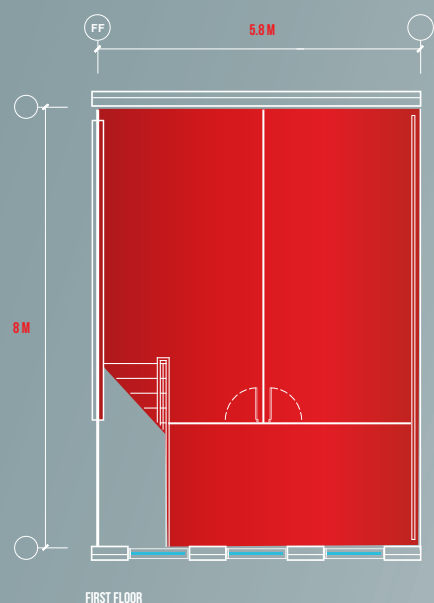
AREA
1,400sqft [131sqm]

RENT PCM
1,750

RENT PA
21,000

SERVICE CHG PA
1,904

Space2work Warrington
All figures are GBP based on standard terms.



Workspace 3 [Hybrid] Workspace Details



Space2work
Warrington



SCAN TO VIEW MICROSITE

Space2work.uk
Premium small business
workspace

Get in touch and start the
journey to your new workspace
today.

0800 433 7000
info@s2w.uk

Space2work is a Bauer Group Holdings Brand.
All rights reserved. © 2024.

bauergroup  wearebauer.uk

We have in preparing this information used our best endeavours to ensure that the information contained therein is true and accurate, but accept no responsibility and disclaim all liability in respect of any errors, inaccuracies or misstatements contained herein. Prospective purchasers should make their own enquiries to verify the information contained herein.

The Brand Expert Studio Driving additional value in real estate
Strategy Branding Marketing Placemaking