

# Block 6 [GF/ FF] Workspace Details



Space2work  
Warrington



SCAN TO VIEW MICROSITE

**Space2work.uk**  
Premium small business  
workspace

Get in touch and start the  
journey to your new workspace  
today.

Enquire now

**0800 433 7000**

Space2work is a Bauer Group Holdings Brand.  
All rights reserved. © 2024.

bauergroup  wearebauer.uk

We have in preparing this information used our best endeavours to ensure that the information contained therein is true and accurate, but accept no responsibility and disclaim all liability in respect of any errors, inaccuracies or misstatements contained herein. Prospective purchasers should make their own enquiries to verify the information contained herein.

The Brand Expert Studio Driving additional value in real estate  
Strategy Branding Marketing Placemaking



# Block 6 [GF/ FF]

AREA  
6,319sqft [592sqm]

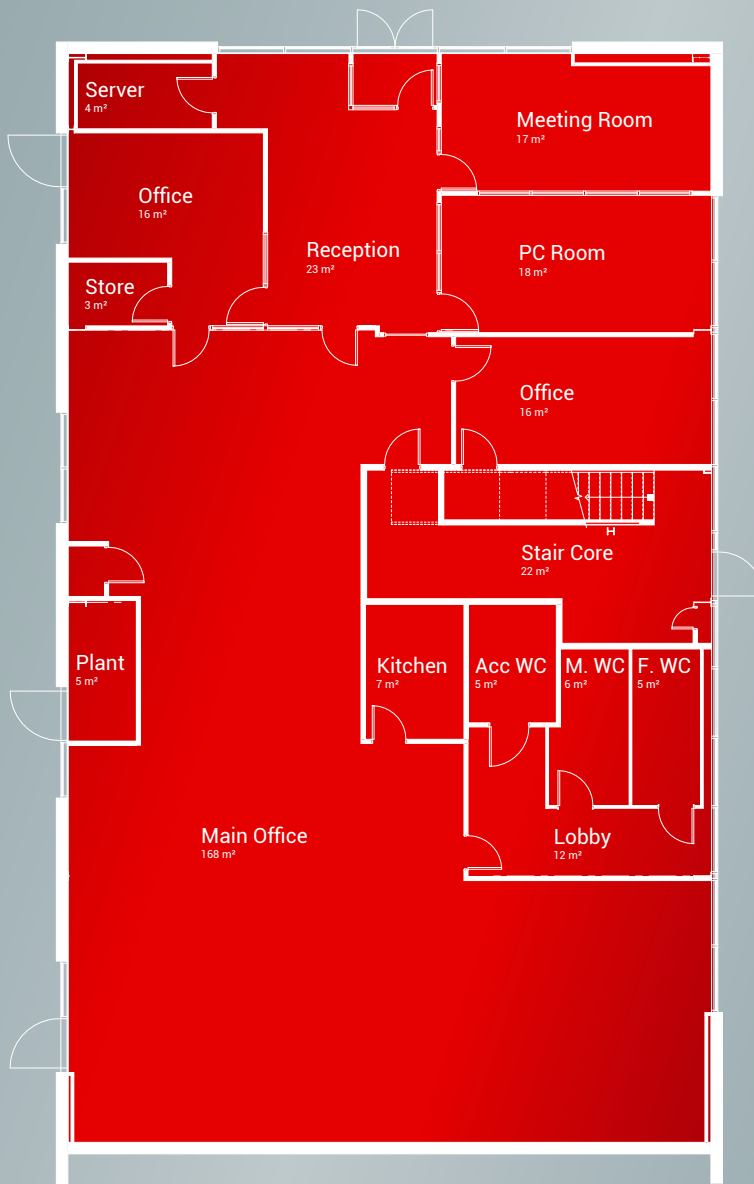
RENT PCM  
8,162

RENT PA  
97,944

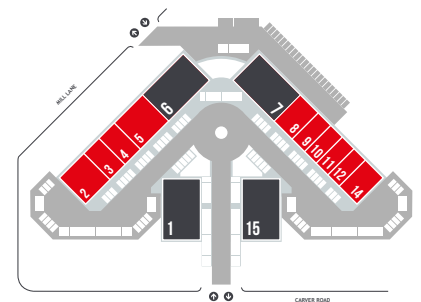
SERVICE CHG PA  
11,322

Please see overleaf for FF plan.

GF/ FF



Space2work Warrington  
All figures are GBP based on standard terms.



s2w-warrington.uk

Space2work Warrington  
[Grey] Multi Suite Office Space [Red] Single Hybrid Space



# Block 6 [Option to Split]

GF AREA  
3,150sqft [290sqm]

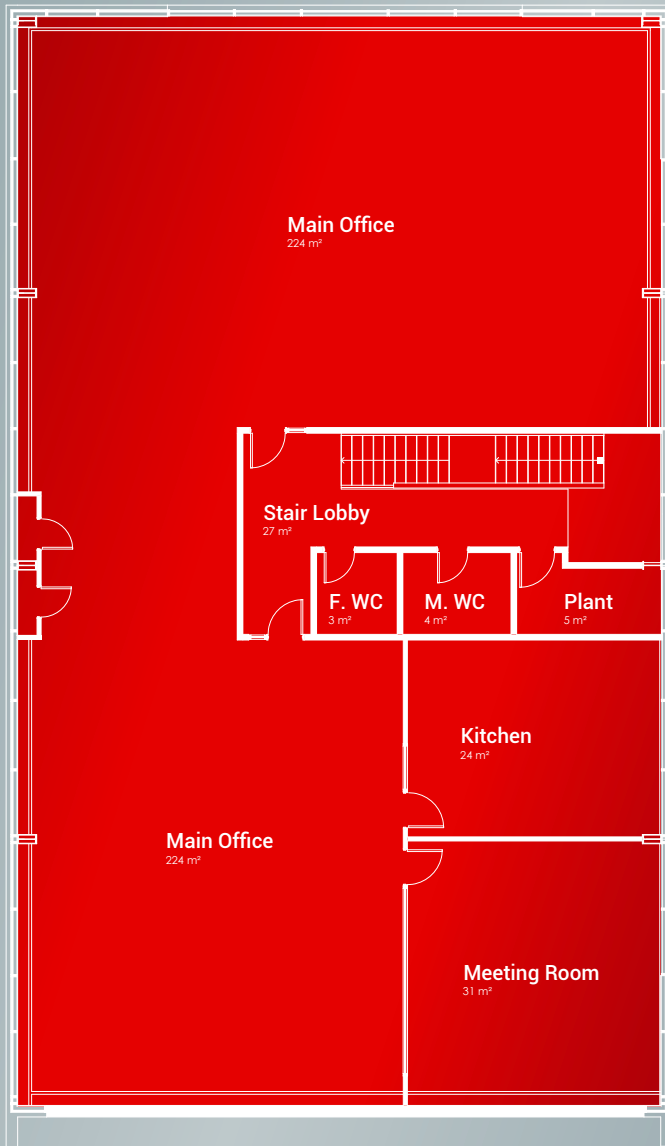
FF AREA  
3,150sqft [290sqm]

Please contact one of our friendly team to discuss your requirements

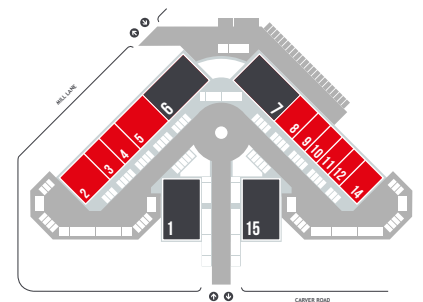
**0800 433 7000**

Please see overleaf for GF plan.

**GF/ FF**



Space2work Warrington  
All figures are GBP based on standard terms.



[s2w-warrington.uk](http://s2w-warrington.uk)

Space2work Warrington  
[Grey] Multi Suite Office Space [Red] Single Hybrid Space